

SFH series

FILTERING CARTRIDGES
SINTERED FIBRES
HIGH FLOW-RATE



FEATURES:

- High flow-rate
- High mechanical strength
- High temperature resistance
- Excellent chemical compatibility
- Pleated construction
- Cleanable
- High dirt holding capacity
- Very low initial Delta-P
- No media migration
- 1935/2004/CE certification available upon request
- Filtration direction from outside to inside or inside to outside
- Available with high-flow design, flow direction from in to out compatible with HPF series cartridges or equivalent
- Two different construction material available
- Fully welded construction
- Suitable for both liquid and gas filtration
- Absolute filtration rating from 3 to 60 μm

MAIN APPLICATIONS:

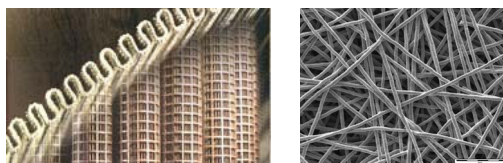
- FINE CHEMICALS
- PETROCHEMICAL
- OIL & GAS
- POWER GENERATION
- FOOD & BEVERAGE
- PHARMACEUTICAL

ASCO FILTRI

a **mott** company



Brochure no: 026-SFH-22-UK-4



ASCO Filtri S.p.A.

Viale delle Scienze, 8

20082 Binasco (MI) - Italy

Phone: +39 02 89703.1

Fax: +39 02 89703.410

E-mail: info@ascofiltri.com

Web: www.ascofiltri.com

SFH series

FILTERING CARTRIDGES
SINTERED FIBRES
HIGH FLOW-RATE

TECHNICAL DATA

DIFFERENTIAL PRESSURE

Cartridge replacement:

1.0 bar @ 25 °C

Max. allowable:

3.0 bar @ 25 °C

WORKING TEMPERATURE

360 °C

CONSTRUCTION MATERIAL

Filter media:

- 316L SS

Hardware:

- 304 SS

- 316L SS

Gaskets:

- Buna-n max. 120 °C

- EPDM max. 120 °C

- Viton max. 230 °C

- Silicone max. 230 °C

- PTFE max. 250 °C

- Soft PTFE max. 250 °C

- KlingerSil max. 360 °C

DIMENSIONS

OD / ID x H:

F1: 105/65 x 490 mm

F2: 105/65 x 1000 mm

D1: 135/92 x 490 mm

D2: 135/92 x 1000 mm

H1: 143/106 x 490 mm

H2: 143/106 x 1000 mm

B1: 178/134 x 490 mm

B2: 178/134 x 1000 mm

C1: 240/194 x 550 mm

C2: 240/194 x 1000 mm

A1: 267/223 x 550 mm

A2: 267/223 x 1000 mm

640D: 152/89 x 1020 mm

660D: 152/89 x 1540 mm

640H: 152/132 x 1020 mm

660H: 152/132 x 1540 mm

FILTERING AREA

F1: 0.59 m² - F2: 1.18 m²

D1: 0.59 m² - D2: 1.18 m²

H1: 0.59 m² - H2: 1.18 m²

B1: 0.59 m² - B2: 1.18 m²

C1: 0.88 m² - C2: 1.77 m²

A1: 1.77 m² - A2: 3.54 m²

640H/D: 1.18 m²

660H/D: 1.77 m²

Flow-rate / Delta-P data:

Filtration (µm)	Liquids (cP 1.0)					
	F1	D1	H1	B1	C1	A1
03	10	16	18	20	25	35
05	15	25	30	40	70	120
10	18	30	40	50	90	140
20	20	30	40	70	120	160
30	20	40	50	70	120	160
40	23	50	60	80	150	180
≥ 60	23	50	60	80	150	180

Liquids flow-rate (m³/h) - Initial Delta-P 0.1 bar.

Flow-rate valid for clean water, reduce the flow-rate according to the application.

Filtration (µm)	Air (cP 0.018)					
	F1	D1	H1	B1	C1	A1
03	100	280	430	600	800	1200
05	120	340	500	700	950	1450
10	140	390	590	750	1100	1700
20	140	390	590	750	1100	1700
30	140	390	590	750	1100	1700
40	140	390	590	750	1100	1700
≥ 60	150	400	600	760	1200	1900

Air flow-rate (Am³/h). Initial Delta-P 0.07 bar

For gas different than air: DP = 0.07 x gas viscosity (cP) / 0.018 cP (air).

Flow-rate valid for clean air, reduce the flow-rate according to the application.

Filtration efficiency:

		01	03	05	10	20	30	40	60	75
Liquids (µm)	90%	0.6	0.7	2	3	7	15	20	30	40
	98%	0.9	1	3	5	10	20	30	45	50
	99.9%	1	3	5	10	20	30	40	60	75
Gas (µm)	90%	0.15	0.2	0.6	0.7	2	3	7	10	15
	98%	0.25	0.3	0.8	1	3	5	10	15	20
	99.9%	0.3	1	2	3	5	10	15	20	30

Contact us for any further information.

We reserve the right to change the data of this specification without notice.

ASCO Filtri S.p.A.

Viale delle Scienze, 8
20082 Binasco (MI) - Italy

Phone: +39 02 89703.1

Fax: +39 02 89703.410

E-mail: info@ascofiltri.com

Web: www.ascofiltri.com

ASCO
FILTRI
a **mott** company